



TOWERLIGHT



A GREEN AND BRIGHTER FUTURE

It's in our hands

We recognise the importance of combating climate change, that is why we pride ourselves as the global leader in manufacturing green environmentally friendly lighting towers.



Thinking about the future

With World Governments placing an increasing emphasis on reducing pollution on construction sites and civil engineering projects, we set about developing an eco range of green products with environmental considerations right at the forefront.

Not only is this important from a manufacturing responsibility which helps reduce the levels of greenhouse gases, global warming and the rising cost of energy, but it also contributes to customers reducing energy, labour costs and carbon emissions.

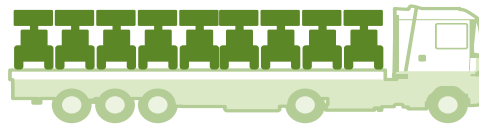
There are **4 key areas** we look at when developing new products, these are:

- **Energy Saving**
- **Carbon Saving**
- **Transport Costs**
- **Labour Costs**

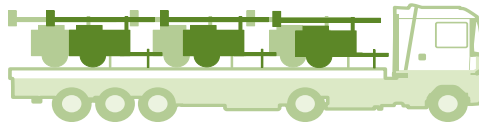
The advantages of the vertical mast allows us to load more units onto a vehicle, thereby reducing not only transport costs but also pollution costs as less vehicles are required.

- **Up to 50% reduction in transport costs**

Vertical mast units = 9 per vehicle



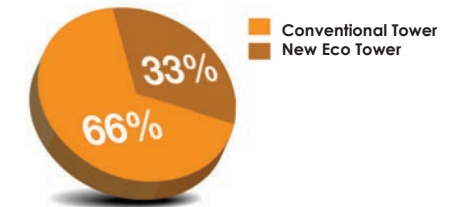
Standard masts units = 6 per vehicle



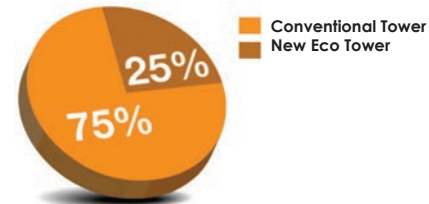
Carbon Footprint CO²



Transport Costs



Labour Costs (per hour)





Working with our customers

We have made significant investment this past year in developing the very latest in green lighting tower technology. Working closely with our major customers, and from our own research, we have manufactured ECO products that are designed to fulfil their entire environmental objective plans.

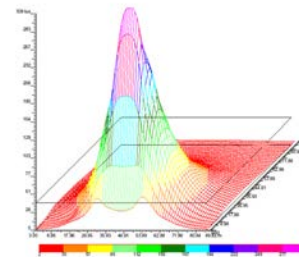
Energy efficient sustainability

For the first time we can now demonstrate our consistent levels of sustainability, by providing energy saving facts and figures when comparing traditional lighting towers to our new green lighting towers.

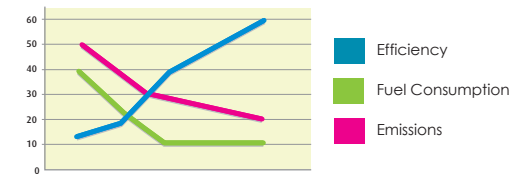
This information will help major contractor customers to report to their local Governments, the savings they are making in helping the environment, by reducing pollution and how much fuel or energy saving the machines use on a typical working day.



Highly detailed 3D drawing of VT-1 Eco lighting tower unit



Our Software technology allows us to develop lighting towers to our customers specific lighting requirements



Our research has enabled us to demonstrate not only the low fuel and emissions output, but also the high efficiency results.



VB9 Lighting Towers

The two new products are the latest derivative of their unique traditional product range, these cleverly designed lighting products are driven by a Hatz Diesel Engine with an automatic electric start - which comply with the latest exhaust emission regulations. These latest products were developed in conjunction with Tower Lights major customers, which keep in line with current concerns about energy use in the modern environment, and constantly seeking new methods to make the Tower Light products more sustainable.

The main key benefits of the VB9 is an option for a 4x150W, which has a runtime of more than 340 hours or the 4x400W unit offering a runtime of more than 200hrs. Both products have a huge impact on the overall carbon usage and running costs.



The VB9 will give a contractor tremendous savings in time and money over traditional Lighting Sets.

- 72% Reduction in Fuel Costs
- 435% Increase in Running Time
- Reduction in Transport Costs by 25%
- Reduction in Emissions to Euro-3 Regulation
- Reduction in Re-Fuelling Labour Cost
- Refuelling 1 x per month instead of 4 x per month

Other Benefits

- 9m. Vertical Mast
- Hydraulic
- Fully Bunded
- Super-Silent
- Certified Wind Stability until 100 km/hr.
- High Efficiency Flood-Lights

Benefits of the ECO-V9 Lighting Tower over Traditional Lighting Towers

	Traditional Lighting Towers	ECO-V9 Lighting Towers	Savings
Fuel Saving (Fuel Cost @ 80p/Ltr) Fuel Consumption	1.93 L/Hr.	0.53 L/Hr.	72%
Running Cost			£127/week/unit
Per Hour	£2.5	£0.68	
Per Day (10 hrs.)	£25	£6.8	
Per Week (7 Days)	£175	£47.6	
Running Time on Full Tank of Fuel	60 hrs.	320 hrs.	+260 hrs.
Labour Saving on Re-Fuelling	4 x per Week	1 per Week	Reduction in Labour and Travel Costs



VT-1 Eco (with Light Sensor)

The principal feature of the VT-1 Eco is an advanced light detection sensor and auto stop/start mechanism that automatically switches on the unit when the ambient light has descended to a predetermined level. In reverse, the sensor will close down the lighting set when sufficient brightness rises. This completely alleviates the need to employ a team of operatives, travelling from site to site, manually starting and stopping each individual lighting set, at night and in the morning.

Combining the two factors of less personnel travelling to site and lighting sets in operation only when it is dark, Tower Light has calculated that reduced pollution levels of up to 30% could be achieved, representing a significant proportion of overall carbon usage reduction.



Financial savings based on a hire of 12 x VT1's

Operator Time Saving

	Standard Lighting Tower		VT-1 ECO Lighting Tower	
	Time per light	Total	Time per light	Total
Time to start unit (Evening)	5 minutes x 12	60mins	0 minutes	0mins
Time to switch off unit (morning)	5 minutes x 12	60mins	0 minutes	0mins

Total saving per day £80 or £560 per week (2 hours per day at £40 per hours)

Operator Fuel Travel & Carbon Saving

	Standard Lighting Tower			VT-1 ECO Lighting Tower		
	Cost per mile	Mileage	Total	Cost per mile	Mileage	Total
Time to Start the lights	£0.24	5	£1.20	0	0	0
Time to Stop the lights	£0.24	5	£1.20	0	0	0

Total mileage saving per day £2.40 or £16.80 per week (2 litres per day at £1.20 per litre)

Fuel (power) & Carbon Saving

	Standard Lighting Tower	VT-1 ECO Lighting Tower
	Manual operating time in hours	Sensor operating time in hours
The light only works in the dark	12 hours	8 hours

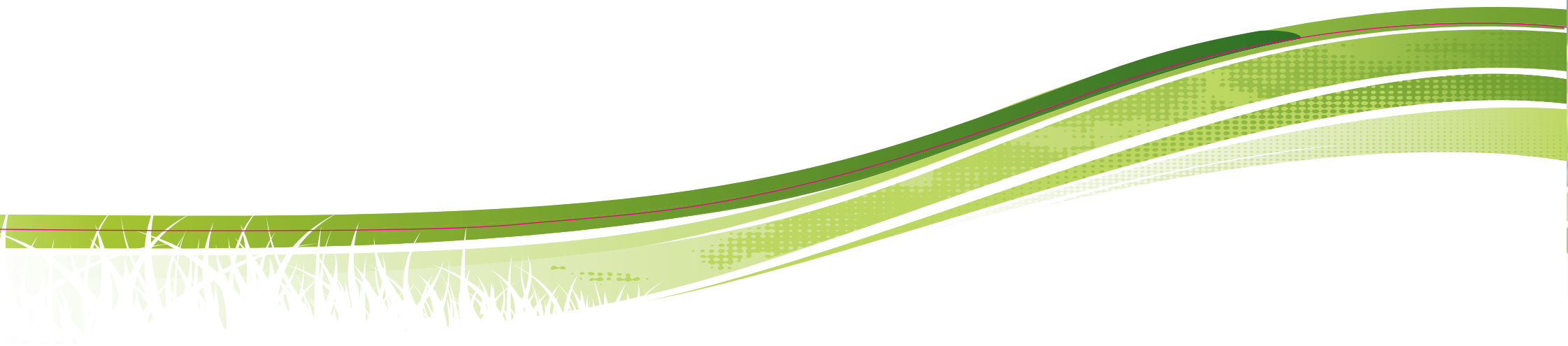
4 hours x 2 litres per hour = 8 litres x 12 unit = 96 litres at £1.20 per litres
Total saving per day £115.20 or £806.40 per week
Reduce carbon output by 30%

Overall Total Saving based on 12 x VT-1's = £1383.20 per week

Overall Total Saving based on 1 x VT-1 = £115.43 per week



This page is the pocket flap for
inside back cover which includes
the cutter guide.



A GREEN AND BRIGHTER FUTURE

It's in our hands



TOWER LIGHT



Tower Light UK

11 Garamonde Drive, Wymbush
Milton Keynes MK8 8DF. UK

Tel. +44 (0)1908 571435

Fax 44 (0)1908 569770

E-mail: sales@towerlight.co.uk

www.towerlight.co.uk